

# Anchor<sup>®</sup>



Feminine  
and Unique



[crochetscrafts.com](http://crochetscrafts.com)



Designed by Natalie Spiteri

Design No.: 0022165-00000-01

MEZ GmbH, 2018. All Rights Reserved.



0022165-00000-01 Colourful Summer Dress

Anchor Creativa Fino Art. No. 4620004-# (colour n°)

2 x #00269, #00395, #00412, #00179, #00306,  
#00100, #00114, #00225, #00363, #00401, #00258

Crochet



Intermediate



N° 3



8/10



## DRESS

### Back and Front

Following the charts, crochet the doilies and assemble them.  
Following the chart, crochet the smaller motives.

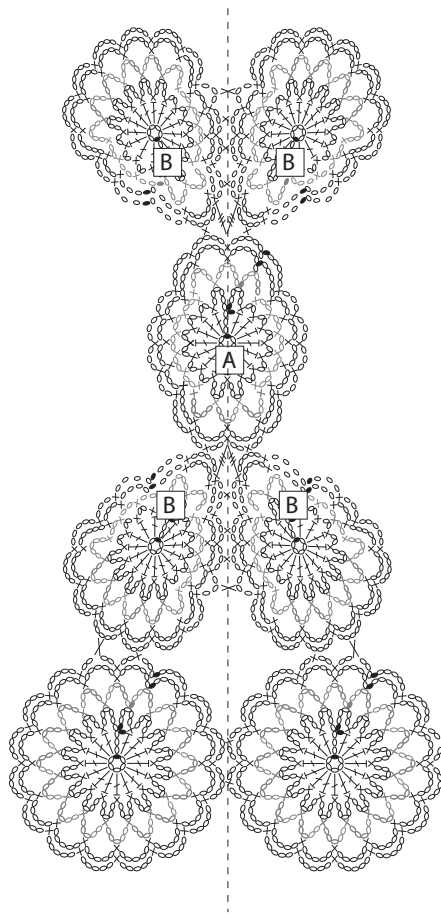
### Assembling and finishing

Using colour 00269 crochet a round around the neck, sleeves and dress hem.

### Washing instructions

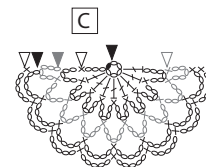
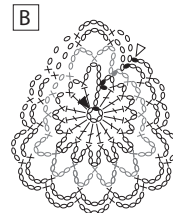
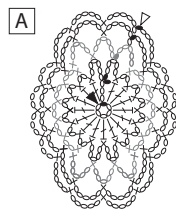
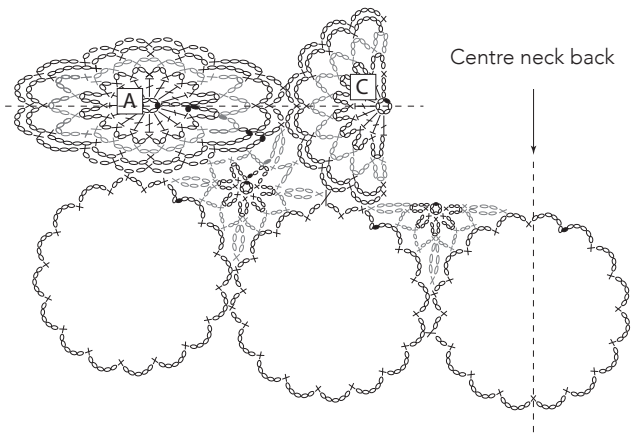
All our threads are produced in accordance with Oeko-tex standards. PH values are tested and all our colors dye lots adhere to Global fastness standards. However, it is important to follow our thread washing instructions. Particularly with dark colors, excess dye can remain on the thread. To minimize any potential bleeding of excess dyestuff it is important to wash the products in THE HOTTEST TEMPERATURE possible, in accordance with the specifications of the fabrics, and use a large amount of water. Please make sure that you also follow the fabric washing instructions. As a precaution, you can also use decolorating sheets that you can find in any supermarket.

Waist

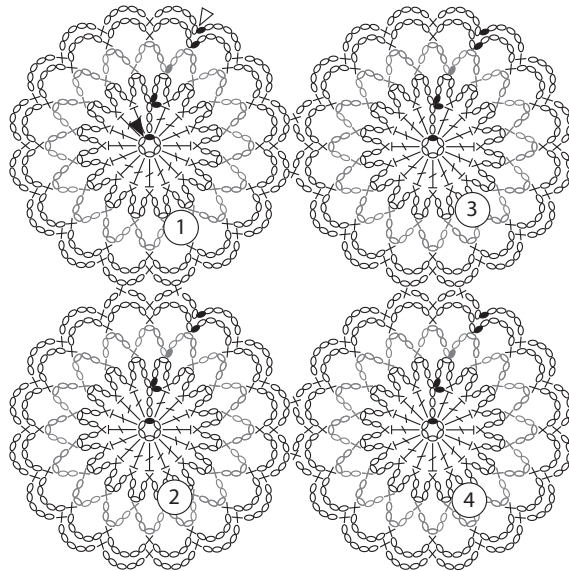


Shoulder

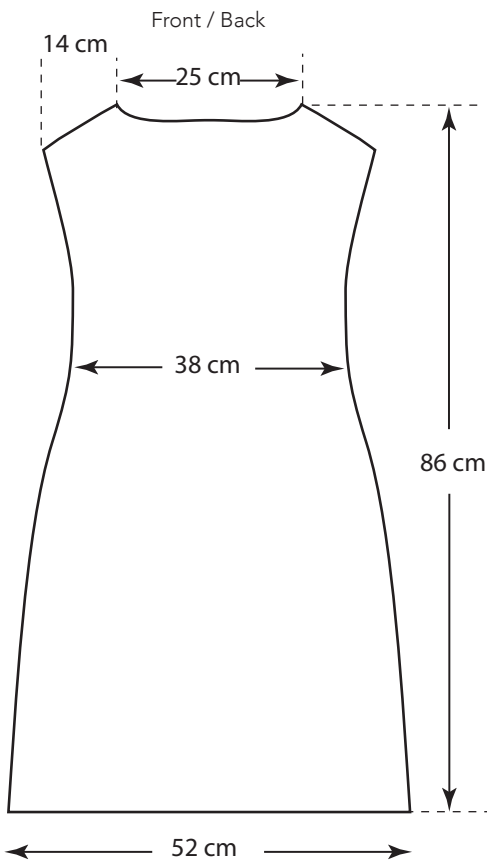
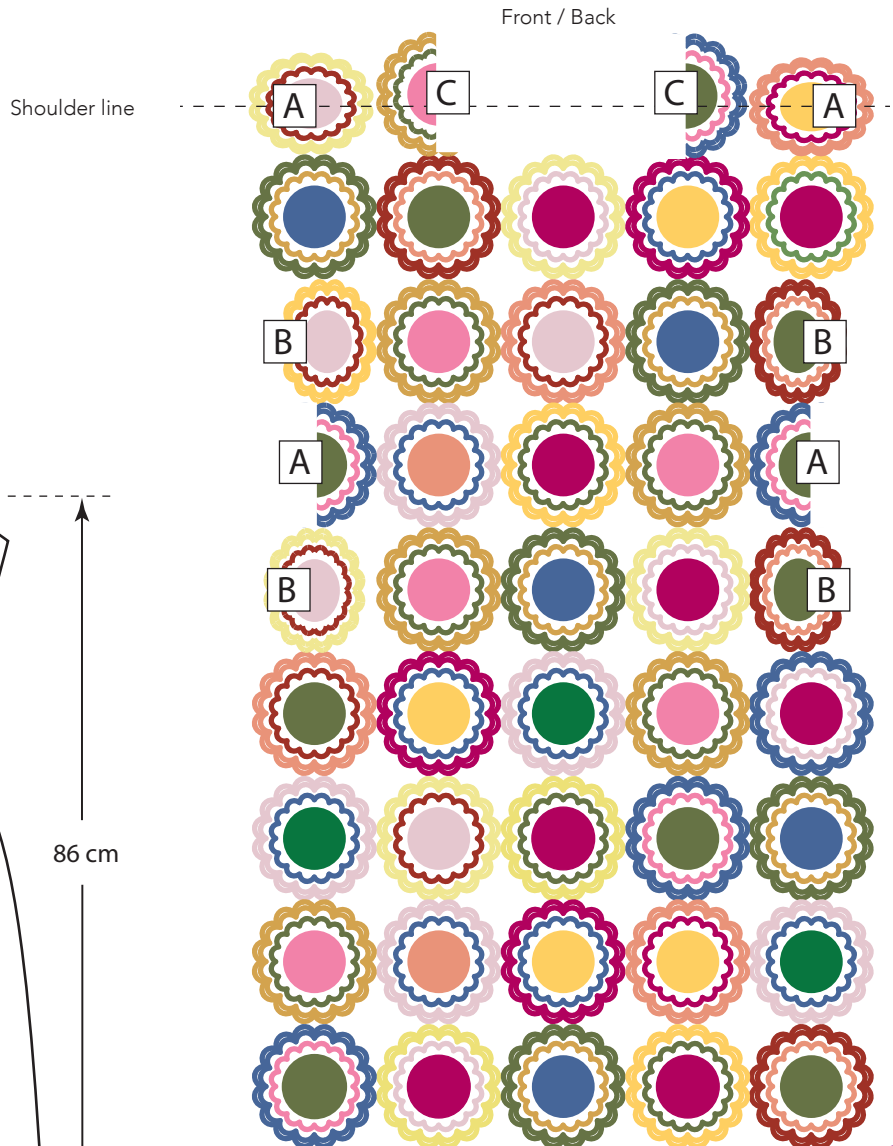
Centre neck back

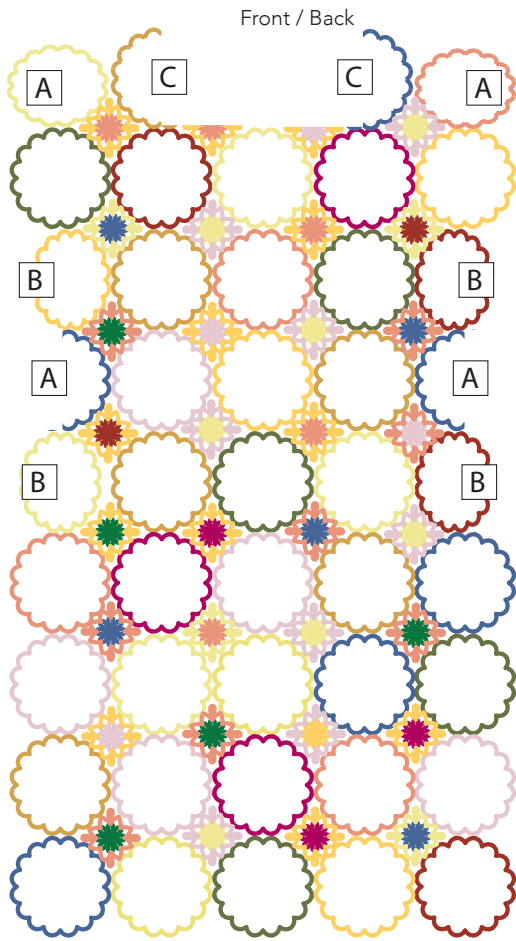




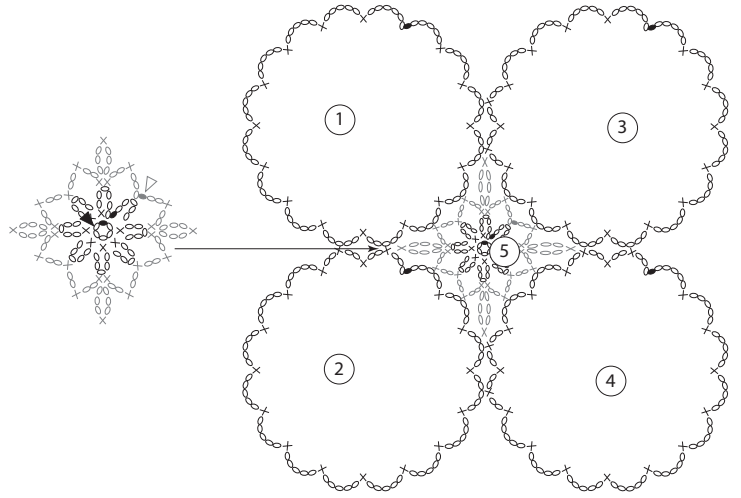


- col 00269
- col 00395
- col 00412
- col 00179
- col 00306
- col 00100
- col 00114
- col 00225
- col 00363
- col 00401
- col 00258





- col 00269
- col 00395
- col 00412
- col 00179
- col 00306
- col 00100
- col 00114
- col 00225
- col 00363
- col 00401
- col 00258



KEY TO CROCHET SYMBOLS

- ▶ Begin
- ▷ End
- ch = chain(s)
- slst = slip stitch(s)
- X dc = double crochet(s)
- ┆ Half treble
- ┆ treble (= tr)
- ┆ double treble (= dtr)
- ┆ triple treble