

Anchor[®]



City Handbag



Designed by Anchor Studio

Design No.: 0022396-00001-08

MEZ Needlecraft GmbH, 2021. All Rights Reserved.





Anchor Crafty Fine 250g - Art. N° 4774200 - * (Colour n°)

Intermediate



30 x 25 x 9 cm



2x *00119



6 mm



N° 18

EXTRAS:
Markers

City Handbag

TENSION

14 dc x 9 rows = 15 x 15 cm

ABBREVIATIONS

sl st	slip stitch
dc	double crochet
ch	chain
st(s)	stitch(es)
rd	round

NOTES

Due to the structure and the yarn weight it is important to work loosely in order to make it easier to insert the crochet hook through the stitches.

The base is worked in spiral rounds, place a stitch marker to the first stitch of the round to mark the beginning of the round. The body of the bag is worked in rounds.

INSTRUCTION

Make a 19 ch for the base and follow the chart.

Round 4 is worked only half way and ends in the middle of the starting side with a sl st. Place a marker, here is the beginning of the round for the body. The circumference counts 54 sts.

Rd 5: 1 ch (does not count as st), 1 sl st in every st. Don't close round with a sl st but take st off the needle, insert hook from behind into the sl st of the previous round, pull the st, which is off the hook, to the back, hook and st are on the back now. **The following rounds are closed the same way. This is important for an invisible round transition.**

Rd 6: 1 ch (no stitch), 1 dc into every horizontal loop behind the sl st (picture 1), close rd.



Rd 7 - 14: 1 ch (no stitch), 1 dc in every back loop, close rd.

HANDLES

Rd 15: 7 dc, 2 dc in next st, 15 ch, leave 11 sts, 2 dc in next st, 7 dc, 1 sl st to close rd.

Rd 16: 1 dc in every st, close rd with sl st.

Rd 17: 1 long dc in every st two rds below, on the handles into the lower edge, close rd with sl st.

Cut yarn and weave in ends.

CHART - HANDBAG BASE

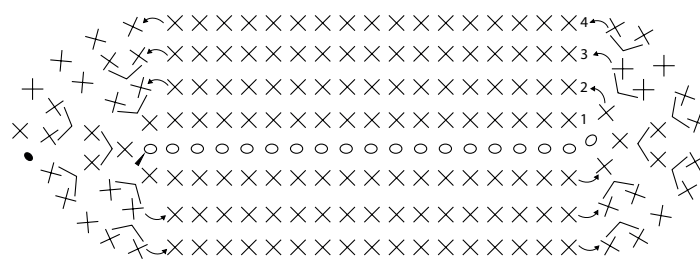


CHART KEY

- ▲ Start
- o Chain
- Slip stitch
- × Double crochet
- ×× 2 double crochet stitched together
- ↶ Work direction

Due to the fact, that Crafty Fine yarn is recycled from colour-assorted textile material and not re-dyed there can be slight variations in color and thickness. We therefore recommend buying enough yarn for your project. We also advise to use a crochet needle without handle, which is easier to work with. The first stitches might be a little bit hard to work, but you will soon get used, and the final result is worth it.

WASHING ADVICE

- Always wash in as warm a water temperature as possible - up to the temperature recommended, with a short spin. Use a lot of water if hand washing. For darker colours we recommend the use of discolouration sheets.
- Do not bleach.
- Do not tumble dry. Drip-dry on a horizontal surface.
- Iron on a hot temperature setting using a damp cloth.
- Professional dry cleaning in tetrachloroethylene.
- Do not use optical brighteners (or any detergent containing optical brighteners). We recommend to use a softener to preserve the natural softness of the yarn.